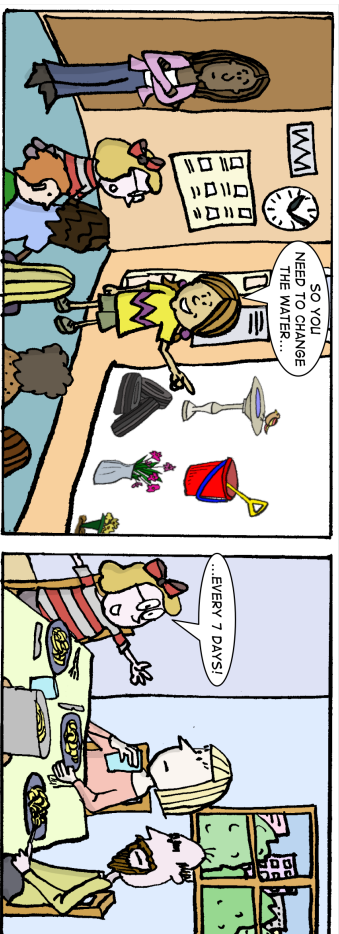


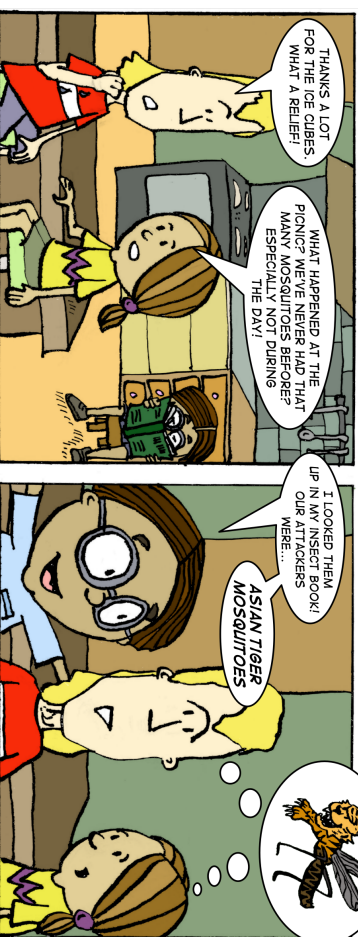
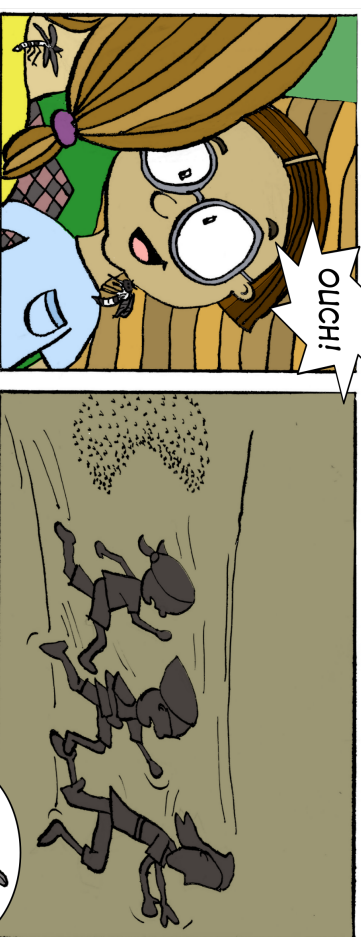
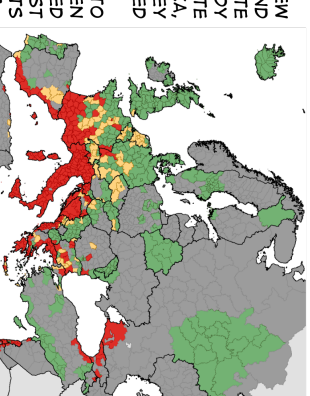
DISEASE DETECTIVES VS ASIAN TIGER MOSQUITO

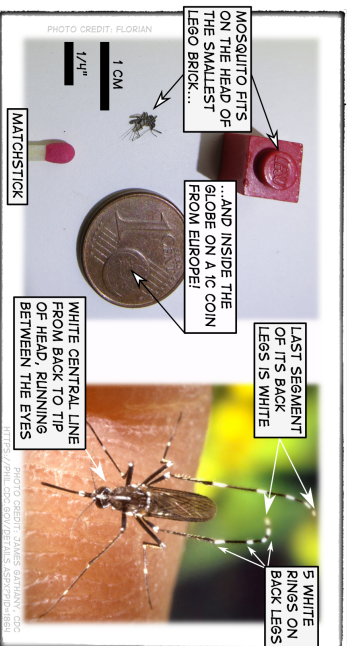


THE ASIAN TIGER MOSQUITO (*Aedes albopictus*) USED TO LIVE IN THE TROPICAL REGIONS OF THE WORLD. IT WAS TRANSPORTED TO TEMPERATE REGIONS LIKE NORTH AMERICA AND EUROPE IN OLD TYRES THAT WERE CARRIED BY FREIGHTSHIPS. WITH LITTLE WATER PUDDLES INSIDE AND THE WARM SUN SHINING ON THEM DURING THE LONG JOURNEY, THE BLACK TYRES WERE THE BEST BREEDING PLACES EVER!

AFTER ARRIVAL, THE MOSQUITOES QUICKLY FOUND NEW PLACES TO BREED AND BITE, LIKE LUCY, THOMAS AND MICHAEL'S ALLOTMENT. THE MOSQUITOES ALONE JUST BITE AND CANNOT INFECT ANYONE AS LONG AS EVERYBODY AROUND THEM IS HEALTHY. BUT THE MOMENT THEY BITE SOMEONE WITH CERTAIN INFECTIONS LIKE DENGUE OR ZIKA, THEY CAN THEN TRANSMIT THE VIRUS TO EVERYONE THEY BITE AFTERWARDS, BECAUSE OF THAT, THEY ARE CALLED "DISEASE VECTORS".

AND THIS IS ALSO WHY YOU HAVE TO PREVENT MOSQUITO BREEDING SITES IN THE FIRST PLACE. IT BECOMES EVEN MORE IMPORTANT IF THERE ARE ALREADY ESTABLISHED COLONIES IN YOUR COUNTRY. PREVENTION IS EASY. JUST MAKE SURE THE 14 DAY BREEDING-CYCLE GETS INTERRUPTED BY CHANGING WATER OR DROPPING BT-PILLS. AND DON'T FORGET TO BRING YOUR FRIENDS!





THE PROBLEM STARTS HERE:
 (1) A TOURIST GETS INFECTED ABROAD DURING HIS TRAVELS
 (2) RETURNS HOME WITH THE DISEASE
 (3) GETS BITTEN HERE BY AN ASIAN TIGER MOSQUITO
 (4) WHICH AFTERWARDS BITES A LOCAL FROM HERE
 (5) WHO THEN FALLS SICK

